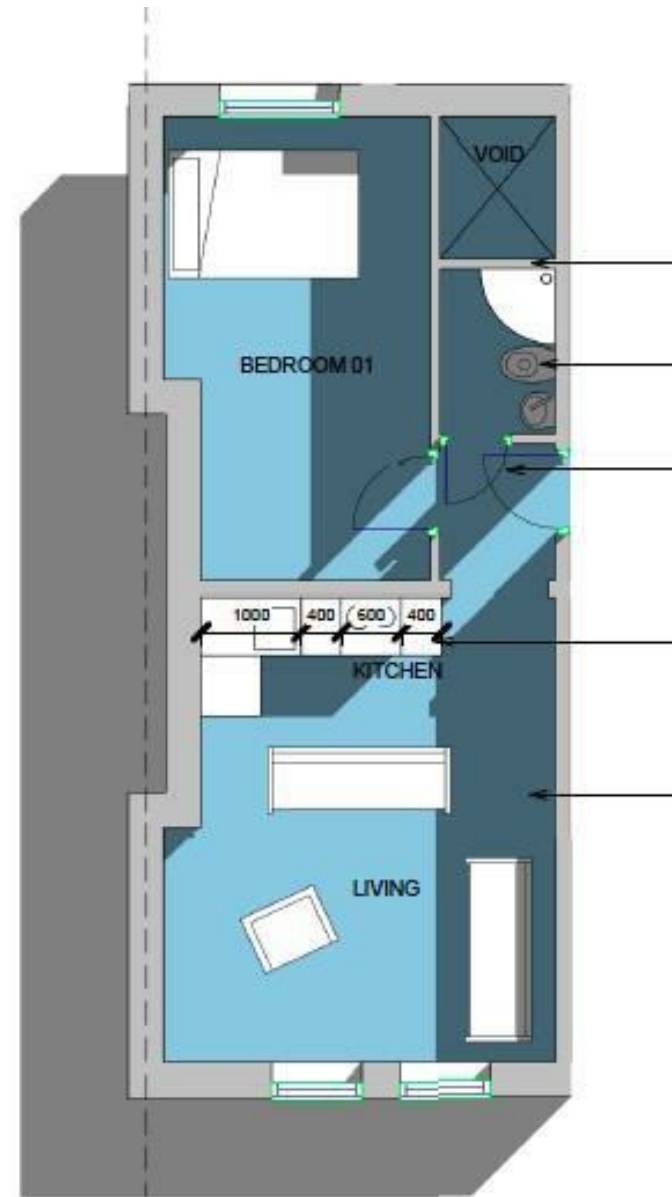




**\*\*AVAILABLE JUNE 2026\*\* \*\*FURNISHED\*\***  
**\*\*ONE BEDROOM APARTMENT\*\*** Smart and stylish one bedroom apartment with open plan reception, ideally located on Grosvenor Place in central Jesmond. Only a stone's throw from the amenities of Osborne Road, close to transport links too, a super property not to be missed!

Set behind communal front gardens, this conversion apartment is situated on the second floor, with secure telephone entry the private accommodation briefly comprises; entrance area through to open-plan reception, with both lounge and kitchen area, kitchen is modern in style with integrated appliances, lounge area with a pleasant outlook; shower room WC, fully tiled; one double bedroom. With laminate flooring, gas central heating and double glazing, this great apartment requires an early inspection and is available to professional or post-graduate tenants. Externally there is a communal off street parking area to the rear, with further on street permit parking available to the front.

Available 1st June 2026 | £925pcm | Top Floor Conversion Apartment | One Double Bedroom | Open Plan Reception | Shower Room WC | Communal Front Garden | Excellent Location | Communal Off Street Parking | Furnished | On Street Permit Parking | DG & GCH | Council Tax Band: A | EPC Rating: C



**FLAT 1**

**£925 PCM**

**IMPORTANT NOTE:** These particulars and the descriptions and measurements herein do not constitute representation and whilst every effort has been made to ensure accuracy, this cannot be guaranteed.

